

marcs

3/10/67

Ju. 43

Ray

Alto f lento

Piano

resubr argenti

cres. accel

desces

calmo

rall.

rall.

mf cresc.

cresc.

sfz.

ff

f

ped. ff

ff

ped.

rit

Cm

Opera
scenetto

ma-res! ma-res!

tu

tempo

ma-res!

Es tuala mar. Bro-furda no-che in-son-dable le

mar cu no-ze-troa ce-si-da ha-to su-ro-zales de a-bio-ma.

rit

so alba

p8-bay

flauto
solo
(2)

Handwritten musical score on a single page, featuring multiple staves. The notation includes treble and bass clefs, various time signatures (3/4, 2/2), and dynamic markings such as *f* and *rall.*. The score is densely written with notes, rests, and slurs, indicating a complex piece of music. The page is numbered 1 in the top right corner.

Handwritten musical score on a single page, featuring multiple staves. The notation includes treble and bass clefs, various time signatures (3/4, 2/2), and dynamic markings such as *f* and *rall.*. The score is densely written with notes, rests, and slurs, indicating a complex piece of music. The page is numbered 1 in the top right corner.



Handwritten musical score for the first system. It consists of three staves: a vocal line (top), a piano line (middle), and a bass line (bottom). The vocal line begins with a treble clef and a key signature of one flat. The piano line starts with a treble clef and a key signature of one flat. The bass line starts with a bass clef and a key signature of one flat. The music is in a common time signature. The vocal line has several notes with slurs and accents. The piano line features chords and melodic lines. The bass line provides harmonic support with chords and a steady rhythm.

Handwritten musical score for the second system. It consists of three staves: a piano line (top), a vocal line (middle), and a bass line (bottom). The piano line starts with a treble clef and a key signature of one flat. The vocal line starts with a treble clef and a key signature of one flat. The bass line starts with a bass clef and a key signature of one flat. The piano line has a dynamic marking of *p* and includes slurs and accents. The vocal line has the lyrics "ma-reo!" and "ma-reo!" written below it. The bass line has a dynamic marking of *p* and includes slurs and accents.

Handwritten musical score for the third system. It consists of two staves: a vocal line (top) and a flute line (bottom). The vocal line starts with a treble clef and a key signature of one flat. The flute line starts with a treble clef and a key signature of one flat. The vocal line has the lyrics "ma-reo!" and "ma-reo!" written below it. The flute line has a dynamic marking of *ff* and includes slurs and accents. The word "perdendosi" is written below the flute line.

Handwritten musical score for the fourth system. It consists of three staves: a piano line (top), a vocal line (middle), and a bass line (bottom). The piano line starts with a treble clef and a key signature of one flat. The vocal line starts with a treble clef and a key signature of one flat. The bass line starts with a bass clef and a key signature of one flat. The piano line has a dynamic marking of *ff* and includes slurs and accents. The word "Ped." is written below the piano line. The vocal line has the lyrics "E - ta sola mar" and "no - tum da" written below it.

Handwritten musical score for the fifth system. It consists of two staves: a vocal line (top) and a flute line (bottom). The vocal line starts with a treble clef and a key signature of one flat. The flute line starts with a treble clef and a key signature of one flat. The vocal line has the lyrics "E - ta sola mar" and "no - tum da" written below it. The flute line has a dynamic marking of *p* and includes slurs and accents.

Handwritten musical score for the sixth system. It consists of three staves: a piano line (top), a vocal line (middle), and a bass line (bottom). The piano line starts with a treble clef and a key signature of one flat. The vocal line starts with a treble clef and a key signature of one flat. The bass line starts with a bass clef and a key signature of one flat. The piano line has a dynamic marking of *p* and includes slurs and accents. The word "Regiment" is written below the piano line.

Voz
fl.
Pian
Voz
fl.
Pian
Voz
fl.
Pian

ma-res! *Eo-ta a-la mar* *no-fun-da*

Voz

fl.

Piano

Detailed description: This system contains the first three measures of the piece. The vocal line (Voz) has a treble clef and a key signature of one sharp (F#). The lyrics are "ma-res!" followed by "Eo-ta a-la mar" and "no-fun-da". The flute (fl.) part has a treble clef and plays chords and melodic lines. The piano (Piano) part has a grand staff with a key signature of one sharp and includes dynamic markings like *f* and *fz*.

no-che *en son* *dable la* *mar en no-*

Voz

fl.

Piano

Detailed description: This system contains measures 4-6. The vocal line continues with "no-che", "en son", "dable la", and "mar en no-". The flute part continues with its melodic and harmonic accompaniment. The piano part features complex chordal textures with various accidentals and dynamics.

-so-tu te-ji-da *has-ta sus yor yales de a-bis-mar*

Voz

fl.

Piano

Detailed description: This system contains measures 7-9. The vocal line concludes with "-so-tu te-ji-da" and "has-ta sus yor yales de a-bis-mar". The flute part includes a *rit* (ritardando) marking in the final measure. The piano part also features a *rit* marking and a *8-basse* instruction at the end of the system. The system ends with two empty staves.

Voz *ma-res! ma-res! ma-res que fun-dan los*

fl.

Piano

Voz *no ya*

fl.

Piano

Voz *mar en no-so-tros te sien-do sus gran-des ho ras de luz.*

fl.

Piano

Voz *de lun*

fl.

Piano

This system contains the first vocal line and piano accompaniment. The vocal line is in treble clef with a key signature of one sharp (F#) and a 4/4 time signature. It features a melodic line with a long note on 'de lun' and a fermata. The piano accompaniment is in bass clef, featuring a complex texture with many accidentals and dynamic markings such as *p*, *mf*, and *pp*. There are also some handwritten 'x' marks above notes in the piano part.

Voz

Cl.

This system contains the second vocal line and clarinet accompaniment. The vocal line continues the melody from the previous system. The clarinet part is in treble clef with a key signature of one sharp and a 4/4 time signature. It features a melodic line with many accidentals and dynamic markings like *p* and *pp*. There are also some handwritten 'x' marks above notes in the clarinet part.

nie - blas

muer-tas!

Hablado con la entonación de su

mon-da ch

San basca - - -

cres. ocul. f

f⁵

This system contains the third vocal line and piano accompaniment. The vocal line includes the lyrics 'nie - blas' and 'muer-tas!' with a fermata over the second measure. A handwritten note says 'Hablado con la entonación de su'. The piano accompaniment is in bass clef with a key signature of one sharp and a 4/4 time signature. It features a complex texture with many accidentals and dynamic markings like *f* and *f⁵*. There are also some handwritten 'x' marks above notes in the piano part.

Voz *hi - sa mi ma - ai mien - to a - guor - ca los grandes*

fl.

Piano

tu *p*

ped.

Voz *a - guor deo mi doo!* *yo a ya ga yao*

fl.

Piano

rit *mf cresc.* *mf cresc.*

Voz *del me - dio - de - a ni bra en los pun - tes de la ale -*

fl.

Piano

ay ay ay!
Santa, erma anayayaya (vocal)

gri-a Leo tam-bu-res de la na-de ce-den a las Pi-fu-nos de

Voz

fl.

f.

Piano

f.

Voz

fl.

8: ?

Piano

Voz

fl.

9

4

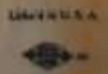
4

Piano

b $\bar{0}$

b \bar{e}

f $\bar{0}$



pe - so de ro - sas mur - tas y al - tas cie -

da - des de lu - mi - na - ban en to - da su

fron - te ma - ri - no ! Con gran - des o - bras se

ten

pad -

ff

cresc. poco a poco

Piano

8c?

f pesante con moto

f

mf cresc.

mf

cresc.

Quis-dras se ba - na - ban en las sa - les de o - ran

cresc. acul

f

de al - ta mar!

rit.

ff

mf

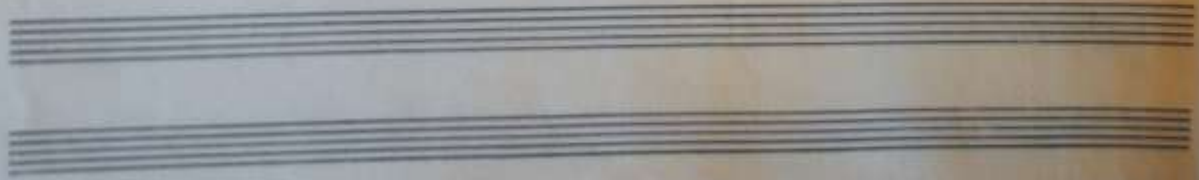
Ped.

El viento va - le -

Ped.

mf

3



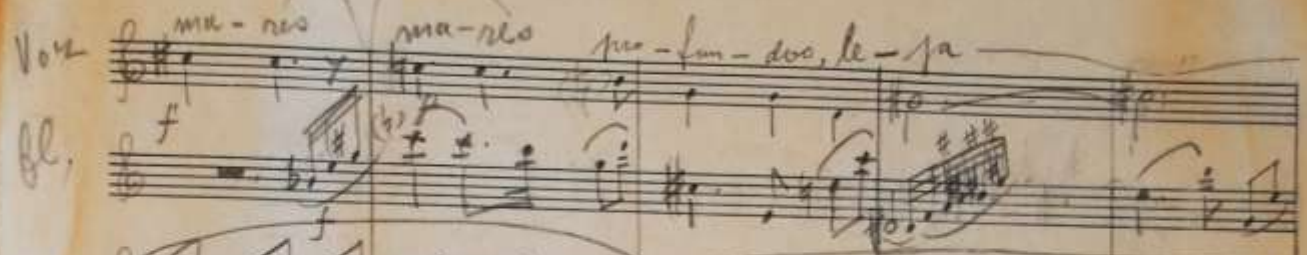
fa — no el vien-to va le — fa — no —

a mo — riv

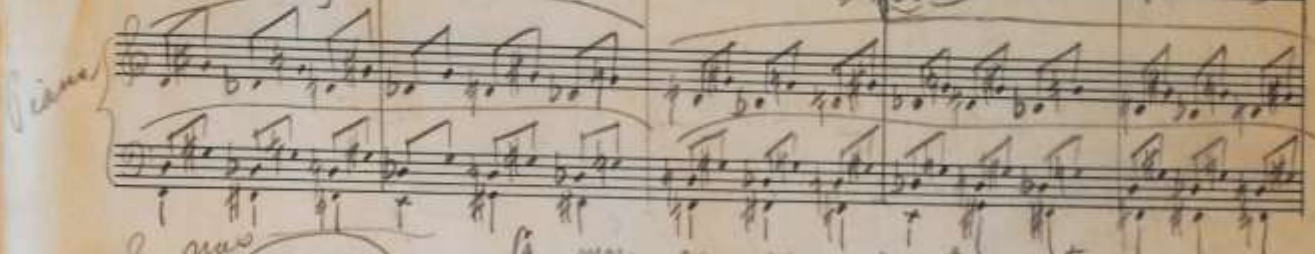
*capite equali
con ai berna*

Voz *ma - res ma - res no - lum - dos, le - pa*

fl. *f*

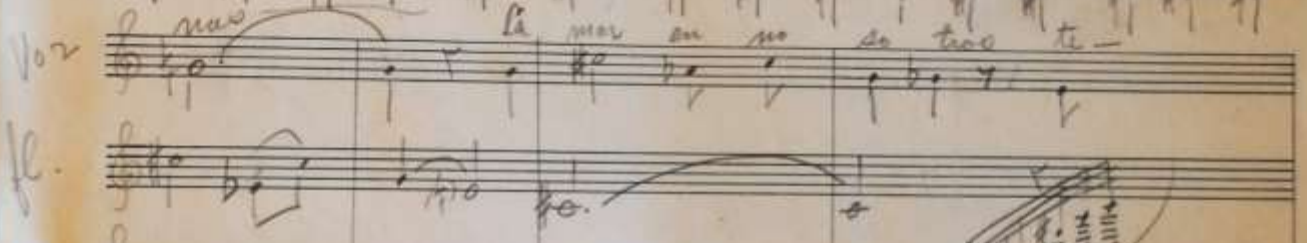


Piano

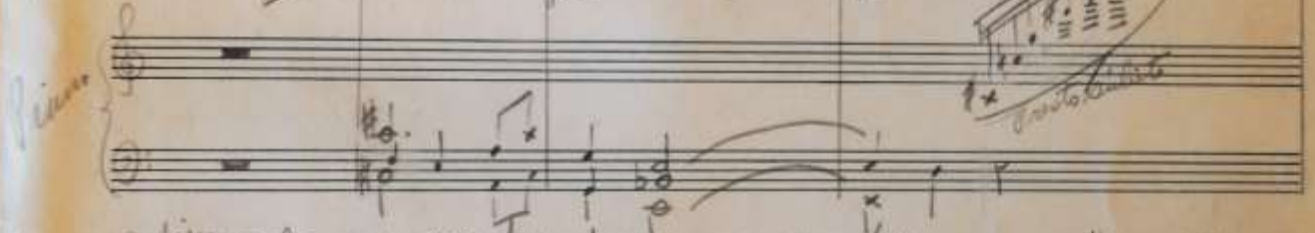


Voz *na - ra la mar au no se tao te -*

fl.

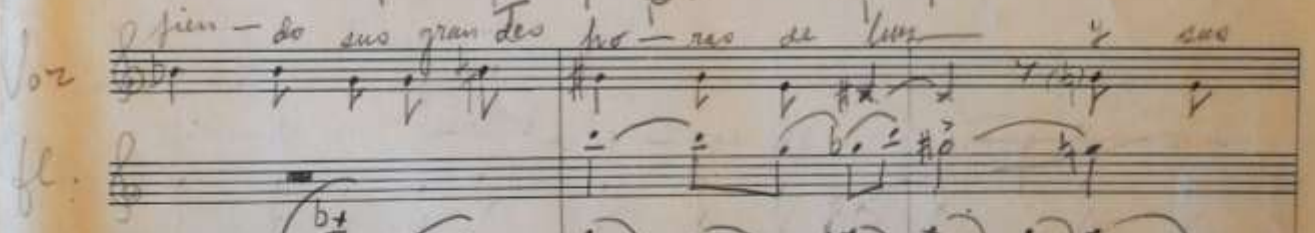


Piano



Voz *pien - do sus gran - des ho - ras de luz*

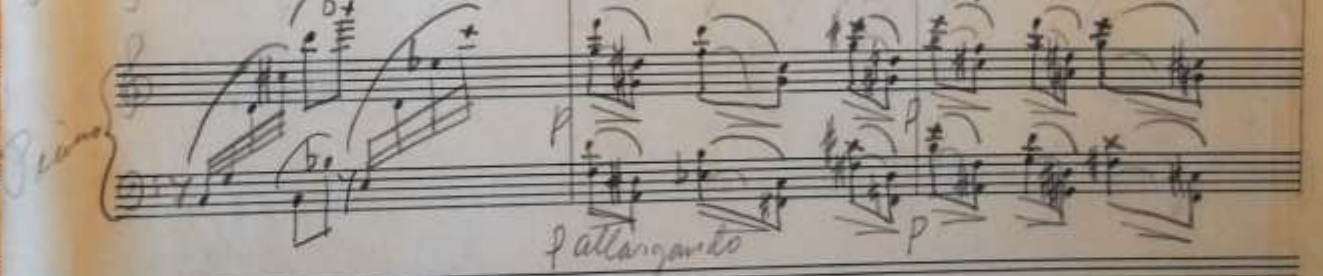
fl.



Piano

p

allargando



sol mi

Voz pie-tas se te re-blas.

fl.

Piano

The image shows a handwritten musical score on aged paper. At the top, there is a vocal line with the lyrics "sol mi" and "pie-tas se te re-blas." written above it. Below the vocal line is a flute part, and further down is a piano accompaniment consisting of two staves. The piano part features complex chordal textures with many accidentals. The score is written in a single system across four staves. Below this system, there are several more empty staves, some with treble clefs and some with bass clefs, indicating a continuation of the piece.

This image shows a page of 14 blank musical staves. Each staff consists of five horizontal lines. The staves are arranged vertically down the page. The paper is off-white and shows some signs of age, including a small brown stain on the right side of the page.



